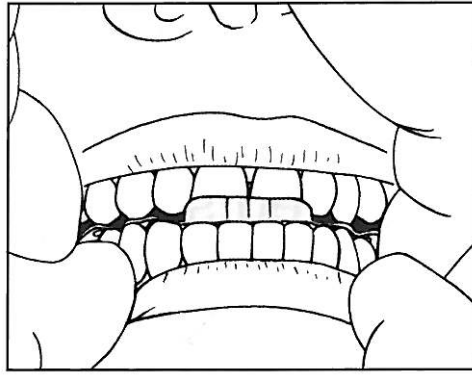
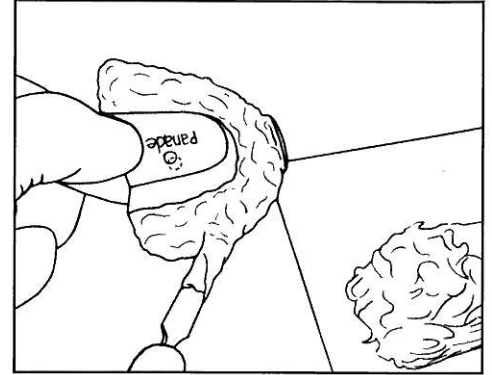


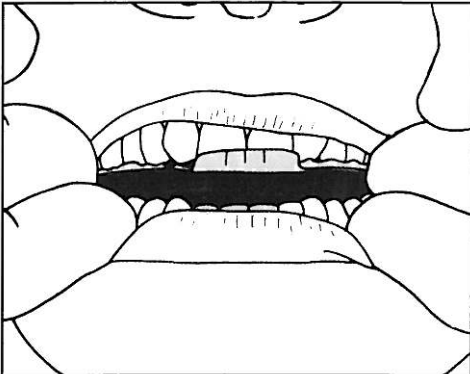
1. Paint both sides of Bite-Tray with fast drying impression adhesive in perforated areas.



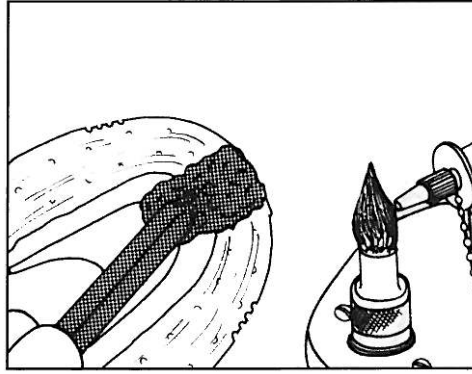
2. Have patient "bite down hard" on Bite-Tray to adapt it to occlusal surfaces of teeth. Use scissors to cut off distal edge of Bite-Tray behind second molar if it is too long.



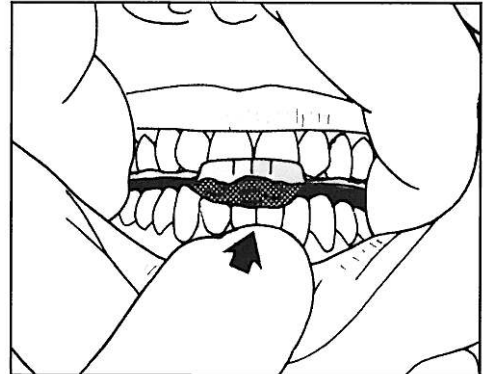
3. Spread bite registration material about 1-2mm thick only on the maxillary side of Bite-Tray.



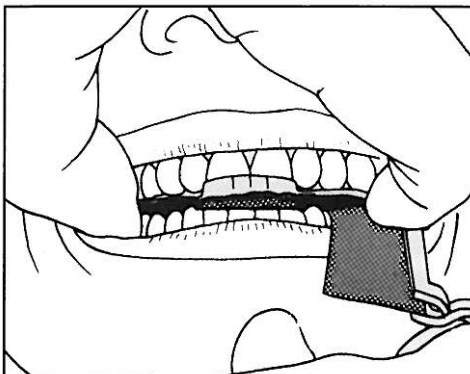
4. Hold Bite-Tray against maxillary teeth with teeth apart and hold while bite registration material sets.



5. Spread hot stick compound about 2cm long and 1cm wide on dry Bite-Tray in area of mandibular incisors. Dip compound end of Bite-Tray in warm water to temper it.



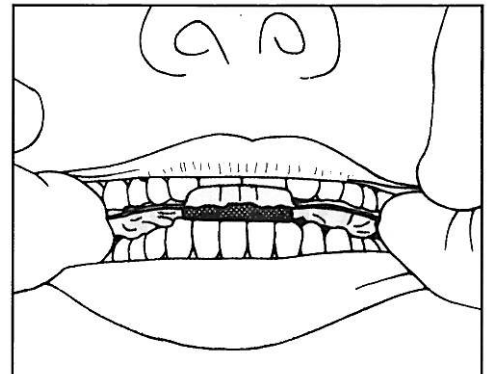
6. Hold Bite-Tray against maxillary teeth. Retrude and hinge mandible slowly up until lower incisors contact soft compound without posterior teeth touching Bite-Tray. Remove Bite-Tray and cool compound.



7. Shave back excess compound to approximately 1mm deep imprints of teeth and verify retracted position. Use marking ribbon to confirm the absence of mandibular posterior contacts with Bite-Tray.



8. Spread bite registration material on the mandibular side of Bite-Tray to make contact with mandibular posterior teeth. (This usually requires more material than upper side.)



9. Hold Bite-Tray against maxillary teeth in the pre molar areas. Have patient position lower incisors into compound index and hold until material hardens. Hold Bite-Tray against maxillary teeth while patient opens mouth to prevent warping Bite-Tray.

Complete Interocclusal Record Instructions available on-line under the help center.